



# FarmOnline®

## Farm Management for Poultry Production



Climate for Growth



## Global growth creates high demand

SKOV is an international market leader within climate control and production monitoring for animal production and has more than 40 years' experience. We develop and produce systems and components for ventilation systems, house air cleaning and production control.

The global increase in population growth and wealth has increased the demand for meat. In a global perspective, the most important meat source is poultry production and it is, therefore, important to optimise production while at the same time safeguarding the welfare of the birds. Thus, productivity and animal welfare play a vital role in modern poultry production. With the growing demand, the producers' need to be able to monitor and control their production increases. SKOV has developed the management system FarmOnline® which is used by the ever-larger poultry farms. FarmOnline® offers the producer a wide range of options for monitoring and controlling his farms, irrespective of their geographical distribution. FarmOnline

makes it possible, among other things, to regulate the climate in the individual houses, receive alarms and exchange strategies between the houses as well as with consultants or SKOV. A FarmOnline® system allows the producer to extract

numerous climate and production data from each house computer and use it to prepare in-depth analyses as well as to take steps to optimise production.



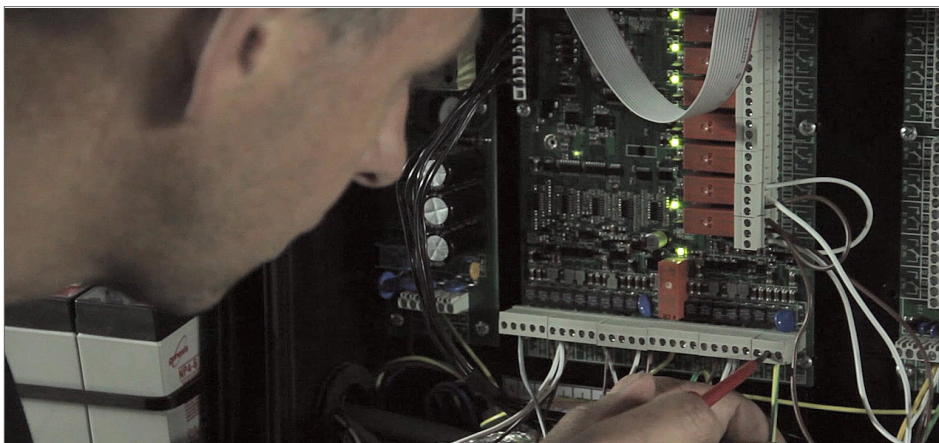


## Data without delay

For the ever-larger poultry producers with production on sites scattered over a large geographical area, ensuring a complete overview of operations is essential. FarmOnline® can be used together with house computers in an existing network and SKOV's new generation of house computers features integrated LAN Ethernet. Therefore, no data has to be

collected between house computers and a PC, which ensures a higher degree of data validity and gives the farm manager more time to take care of his birds. This also enables the producer to react immediately to alarms by, for instance, changing the setup of the house computer via FarmOnline®. In case of an alarm, the producer can intervene immediately

in a qualified way. Immediate action may ensure the welfare of the birds as well as reduce or completely prevent financial losses. If a producer owns several farms, data can be collected from the main office where the producer can carry out in-depth analyses, and thereby optimise productivity.



### SKOV delivers the whole package

The hardware to be used to build a network in a poultry house must be made of resistant materials. SKOV has developed hardware capable of resisting house environments. Therefore, we also offer to deliver and install cabled as well as wireless networks to avoid malfunctioning or breakdowns.



Tabular summary including status and essential key figures

Where	Status	Day	Birds alive	Temp	Humidity	Ventilation req	FCR	Feed/bird	Water/bird
<b>Farm</b>									
House 1		29	36954	22,1 °C	72,8 %RH	89,2 %	1,55	2589 g	5034 ml
House 2		29	37075	22,3 °C	68,1 %RH	100,5 %	1,68	2643 g	4696 ml
House 3		29	37193	22,1 °C	70,9 %RH	128,6 %	1,57	2553 g	5084 ml
House 4		29	37183	21,4 °C	70,9 %RH	96,2 %	1,63	2583 g	5224 ml
House 5		29	36894	22,3 °C	75,7 %RH	94,1 %	1,63	2780 g	5089 ml
House 6		29	37880	21,3 °C	72,9 %RH	96,6 %	1,67	2937 g	5321 ml

## User-friendly and intuitive

Today, house computers are advanced units, featuring numerous options and settings. It can, therefore, be difficult to see whether an employee unintentionally has changed the settings for a house. Thanks to FarmOnline®, deviations from planned strategies are clearly shown to make it easy for the producer to ensure that all his houses operate according to the planned strategy.

FarmOnline® is able to import the producer's own photos and drawings of the farm and sections, ensuring high graphic recognisability in the program. So-called hotspots can be added to the outline views to show the key values for inside temperatures, alarm status, etc.

Adding graphic features for all levels (farm, house, section) will facilitate navigation in the program, providing the producer with an overview of the situation as well as fast and accurate localisation of deviations.

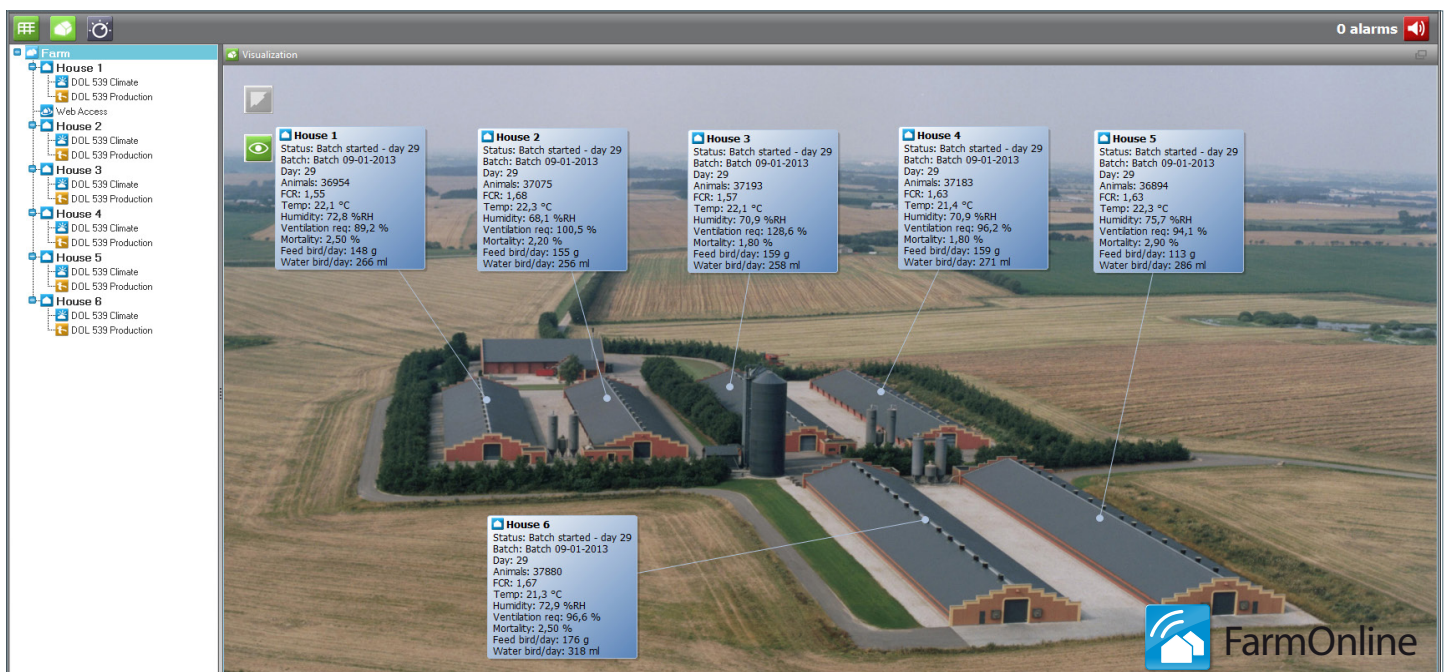
The FarmOnline® system enables table viewing of key values and alarm and house statuses for the entire farm and for individual sections. The producer chooses which values to be included in the overview function.

Tables can be exported to other file formats such as PDF, Microsoft Excel, etc. for documentation or analysis.



## FarmOnline® characteristics

- Live monitoring of an unlimited number of house computers all over the world via the internet
- Clear data overview – graphically or in tabular form
- Detailed alarm log, history and analysis
- FarmOnline® app for smartphones
- Data from several houses is collected centrally from a main office and data can be used to benchmark the individual farms and thus compare them
- Enables the user to access SKOV house computers and change the settings



Using icons and graphic elements to a great extent, FarmOnline® provides the user with a quick overview of the current display and navigation to the essential data in a given situation.



Many features in FarmOnline®

**A** FarmOnline® system enables the producer to select specific key values for temperature, humidity, ventilation, cooling and heating and to display them in a clear graphic form which also allows settings to be changed directly. Batch curves are also accessible for houses with all in/out production. The efficient climate and production history function of FarmOnline allows data storage for up to five years. Several search criteria enable requested data to be extracted and indicated in the form of curves.

### Alarm features increase the safety of the birds

Immediate action is essential to the safety of the birds in case of operational problems in the poultry house. Therefore, FarmOnline® is also an investment in the safety of the birds as the producer will be able to see alarms appearing in a pop-up window, no matter which program is active on the PC. FarmOnline® displays alarms as red markings. Simply click the marking to open an alarm window with alarm details.

Type	Category	Alarm	Where	When
!	📄	Not enough feed	Farm - House 5	09-04-2013 15:37:54
!	☀️	Side inlet 1 failure	Farm - House 1	09-04-2013 15:36:45
!	☀️	High temperature	Farm - House 1	09-04-2013 15:36:38

<b>Not enough feed</b> The feed consumption is 20kg. This is lower than required level. The alarm is only active during a feeding period.		<b>Where:</b> Farm - House 5 <b>When:</b> 09-04-2013 15:37:54 <b>Restored:</b> <b>Duration:</b> <b>Code:</b> 031-0115
The alarm has not been acknowledged <span style="float: right;">Acknowledge</span>		

#### Climate development in the house

Authorised users may acknowledge the alarm. Notes on alarm causes, troubleshooting, etc. can also be added to each alarm. In addition, it is possible for the farm manager to analyse the occurrence of historic alarms, thus adding to the experience of the users. FarmOnline® Explorer

can transmit alarms via text messaging or email. At the user's option, selected alarms can be transmitted from specific houses as text messages or emails to selected recipients.

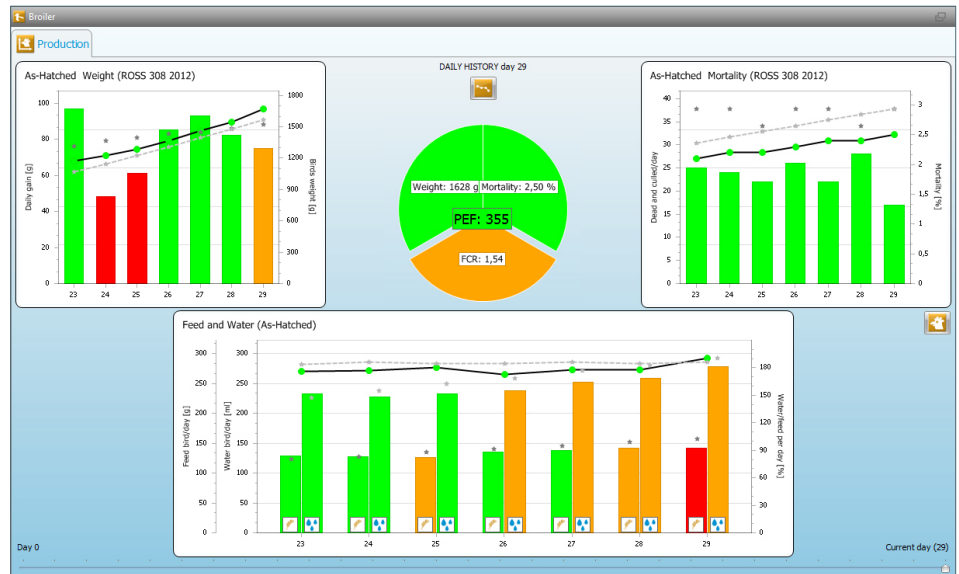
## Production data displayed in a clear way

FarmOnline® presents a lot of production data from the broiler production in clear graphic elements which provide the user with a quick overview and the possibility of making in-depth analyses.

Displaying both current and historic data for mortality, weight and feed consumption, FarmOnline enables you to follow the development of the individual batches as well as to make comparisons across batches.

Comparisons can also be made in relation to references and previous batches. These comparison possibilities provide a well-founded assessment of the productivity of the batch.

Analyses built on historic data enable the producer to optimise his production even more and see in which houses the birds perform best. The producer can use this knowledge in his FarmOnline® system to copy the setup from the best performing house to the other houses and sites in order to improve bird performance safely and quickly.



Key values such as feed conversion ratio (FCR) and production efficiency factor (PEF) are shown in a central display with status indicated by different colours. The entire display is dynamic and continuously adjusted in accordance with the production.

## Keep an eye on the house from your smartphone

Internet access is all you require to access your house computers with a SKOV FarmOnline® app for smartphones, no matter where in the world the computers are. This enables the producer to see production and climate data as well as alarms, thereby minimising the risk of losses in case of a system breakdown. SKOV's mobile app can be downloaded to Android, iPhone and Windows Phone.



SKOV A/S  
Hedelund 4 • DK-7870 Roslev  
T: (+45) 7217 5555

SKOV Asia Ltd.  
PB Tower • TH-10110 Bangkok  
T: (+66) 2 382 3031-2

[www.skov.com](http://www.skov.com)

Dealer



*Climate for Growth*