



The Best-Performing Hatcher for Superior Chick Quality and Hatchability

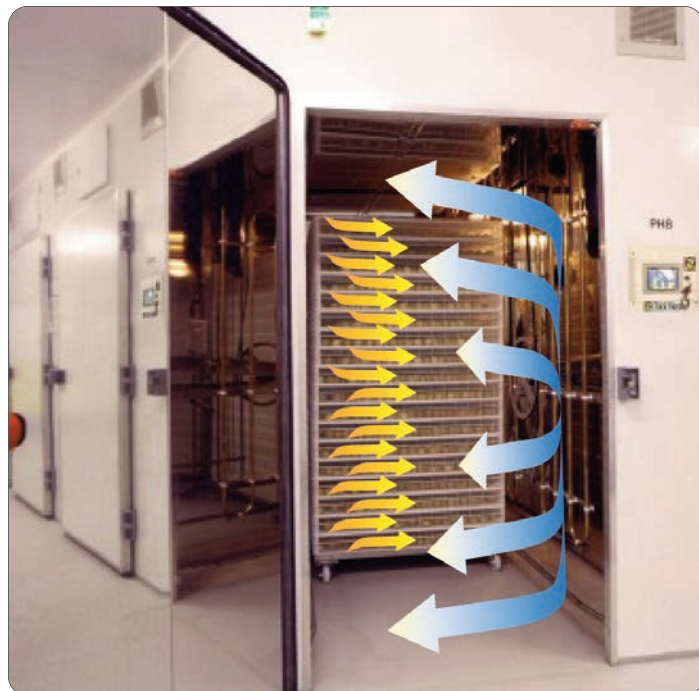




Designed to Produce the Strongest, Healthiest Chicks

The Zephyr hatcher stands out for consistency — its unique ability to manage temperature and humidity conditions for every chick, in every basket, at every stage of the dynamic hatch cycle.

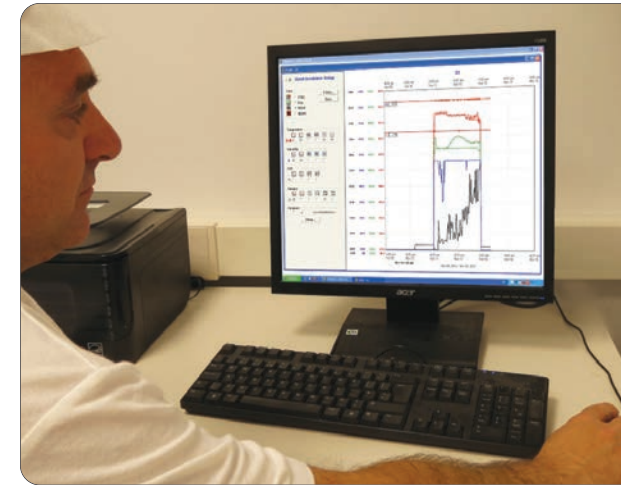
Learn more about the Zephyr's features and benefits that enable the most uniform hatch, producing healthy chicks and maximizing your profits.



Consistent temperature and perfect humidity levels keep chicks healthy and comfortable

Superior Airflow: Keeping Chicks Cool and Comfortable

- Uniform airflow allows the hatch to progress naturally with a narrow hatch window
- Baskets are placed between the paddle fan and hatcher wall, providing efficient airflow and heat removal
- High cooling capacity maintains the appropriate temperature inside the hatcher baskets, keeping chicks comfortable



Maestro system manages the complete incubation and hatch process

Modular, Flexible Design

- Choose from single zone or dual zone, with independent temperature control per zone
- Zephyr can be designed to accommodate a wide variety of hatcher baskets and capacities of eggs for different applications
- Capacity range from 20,000 to 60,000 eggs

Designed for Bio-Security

- Standard smooth fiberglass or optional stainless steel walls facilitate ease of cleaning



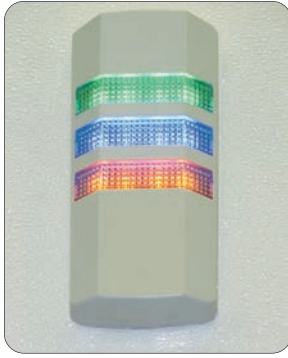
Optional Security Features Provide Added Insurance

- Hi-Lites — View the operational status of the Zephyr at a glance
- Break Glass — Provides immediate additional cooling in case of alarm, giving you valuable time
- OrAlarm — Central alarm system provides added peace of mind with callout feature

Easy to Operate

- Access any feature of the hatcher with the easy-to-use, intuitive Genesis control system
- Controls are designed with unique programmable features, including Allen-Bradley or Omron PLC components





Hi-Lites displaying operational status



Easily accommodates the 600x400 chick box



Corridor with Zephyr hatchers



C192 with smooth fiberglass interior and GeM Control

ChickMaster provides a complete line of products and services that meet the needs and demands of today's hatcheries.

Incubation Systems				
Environmental Systems				
Management Systems				
Upgrades & Replacement Parts				

About ChickMaster

Since its founding in 1948, ChickMaster has evolved into one of the most comprehensive and technologically advanced partners for hatcheries around the globe. The Company maintains its longstanding commitment to building and supporting leading-edge setters and hatchers. In addition, ChickMaster offers products and solutions that complement any environment, optimizing hatchability through better air, moisture, and security controls. **Learn more at www.chickmaster.com.**



ChickMaster North American
Sales Office
327 Dahlonga Street, Suite 801
Cumming, Georgia 30040, USA
Tel: +1 (678) 341-9047
Fax: +1 (678) 771-8867

ChickMaster International
25 Rockwood Place, Suite 335
Englewood, New Jersey 07631, USA
Tel: +1 (201) 871-8810
Fax: +1 (201) 871-8814

ChickMaster UK Limited
1 The Leggar, Bridgwater
Somerset, TA6 4AF, United Kingdom
Phone: +44 (0)1278 411000
Fax: +44 (0)1278 451213